

# CAT6 PATCH LEADS - REDUCED O.D

Hypertec Category 6/Class E reduced diameter patch leads are ideal for high density patching as their small 3.7mm diameter jacket requires less space in a rack than standard Category 6 patch leads.

As racks become more heavily populated with equipment, cables and patch cords and as space inside a rack fills, cable management becomes more and more of a challenge with large bundles of cable that reduce air flow and are difficult to neatly route between switches and patch panels.

Our reduced diameter patch leads take up less room and are more flexible than standard patch leads, making cable management in high density racks quick and easy. The smaller bundles help to improve air flow within the rack resulting in lower cooling costs.

Compared to standard Cat6 patch leads with a typical diameter of 6mm, these reduced diameter leads are 40% smaller, allowing almost twice as many leads to be routed through cable managers and pathways within the rack.

Made from 28 AWG stranded bare copper conductors, they have been tested and ETL verified to meet all the electrical performance requirements of ANSI/TIA 568-C.2 Category 6.

## Features

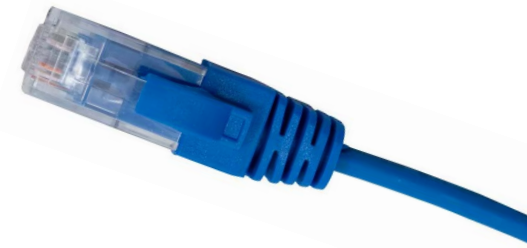
- Reduced diameter for improved flexibility higher density patching
- Smaller bend radius from 28 AWG stranded conductors
- Performance tested to ANSI/TIA 568-C.2
- Available in a variety of lengths starting from 0.3m

## Compliant Standards

- RCM CA/AS 2008:2010
- ANSI/TIA-568-C.2 Category 6 Performance
- RoHS

## Specifications

FEATURE	DESCRIPTION
Number of Pairs	4
Conductors	28 AWG (7/0.12) Stranded Bare Copper
Jacket Material	LSZH
Outer Diameter	3.7mm (+/- 0.2mm) nominal
Connector Type	RJ45 Plug (8P8C)
Wiring Scheme	568A
Operating Temperature	- 35°C to +90°C



## Ordering Information

LENGTH (m)	0.3	0.5	1	1.5	2	3	5
Black	HCAT6BK0.3SL	HCAT6BK0.5SL	HCAT6BK1SL	HCAT6BK1.5SL	HCAT6BK2SL	HCAT6BK3SL	HCAT6BK5SL
Blue	HCAT6BL0.3SL	HCAT6BL0.5SL	HCAT6BL1SL	HCAT6BL1.5SL	HCAT6BL2SL	HCAT6BL3SL	HCAT6BL5SL
Green	HCAT6GN0.3SL	HCAT6GN0.5SL	HCAT6GN1SL	HCAT6GN1.5SL	HCAT6GN2SL	HCAT6GN3SL	HCAT6GN5SL
Red	HCAT6RD0.3SL	HCAT6RD0.5SL	HCAT6RD1SL	HCAT6RD1.5SL	HCAT6RD2SL	HCAT6RD3SL	HCAT6RD5SL
White	HCAT6WH0.3SL	HCAT6WH0.5SL	HCAT6WH1SL	HCAT6WH1.5SL	HCAT6WH2SL	HCAT6WH3SL	HCAT6WH5SL
Yellow	HCAT6YW0.3SL	HCAT6YW0.5SL	HCAT6YW1SL	HCAT6YW1.5SL	HCAT6YW2SL	HCAT6YW3SL	HCAT6YW5SL