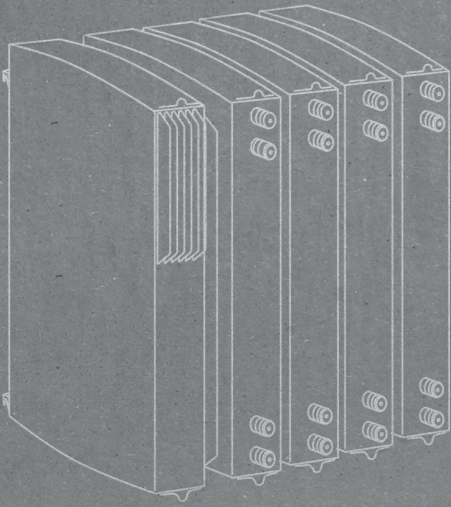




IKUSI
velatia



**PRICE LIST
AUSTRALIA**



IKUSI
velatia

2017

International presence



Paseo Miramón, 170
20014 Donostia/San Sebastián
Gipuzkoa, España
Tel.: +34 943 44 89 44
Fax: +34 943 44 88 20
television@ikusi.com
www.ikusi.tv

AUSTRALIA - NEW ZEALAND
7 Amsted Road
3153 Bayswater (Victoria)
Telf: +61 3 97208000
Fax: +61 3 97207422
australia.tv@ikusi.com
www.ikusi.tv/en

ESPAÑA
Pol. Ind. San Marcos
c/ Morse esq. Franklin
28906 Getafe, Madrid
Tel.: +34 915 15 51 10
television@ikusi.com
www.ikusi.tv

MIDDLE EAST
6WA-504, Dubai
Airport Free Zone
PO Box: 54585 Dubai - U.A.E.
Telf: +971 4 2994770
Fax: +971 4 2994775
dubai.tv@ikusi.com
www.ikusi.tv/en

FRANCE
62 avenue du 8 mai 1945
64101 Bayonne Cedex
Tel.: +33 1 42 84 87 12
france.tv@ikusi.com
www.ikusi.tv/fr

Price list 2017

Index

Reception

- Page 2 TERRESTRIAL ANTENNAS
- Page 2 ANTENNA ACCESSORIES
- Page 3 PARABOLIC ANTENNAS AND LNB
- Page 3 MAST AMPLIFIERS AND POWER SUPPLIES

Headends

- Page 4 BROADBAND AMPLIFIERS
- Page 5 SZB HEADEND
- Page 5 STAND ALONE MODULATORS
- Page 6 ClassA HEADEND
- Page 7 ClassA HEADEND ADVANCED
- Page 7 Ikusi FLOW HEADEND

Distribution

- Page 8 TAP-OFFS AND SPLITTERS
- Page 9 APARTMENT AMPLIFIERS
- Page 9 LTE FILTERS
- Page 9 LINE EXTENDER AMPLIFIERS
- Page 10 TV WALL OUTLETS
- Page 10 COAXIAL CABLES
- Page 10 CONNECTORS
- Page 11 OPTICAL DISTRIBUTION SYSTEMS
- Page 11 OPTICAL LNB

AUSTRALIA - NEW ZEALAND
7 Amsted Road . 3153 Bayswater (Victoria)
Telf: +61 3 97208000 . Fax: +61 3 97207422
australia.tv@ikusi.com
www.ikusi.tv

Contact
Us!



Product adapted to 1st and 2nd Digital Dividend



NEW product



Product available in stock

Terrestrial reception

Ref. Model Description Availability Quant./Pack. AUD/unit

Terrestrial antennas. Flashd Series

BIV/V ANTENNAS. ADAPTED TO 1st and 2nd DIGITAL DIVIDEND (LTE)

| | | | | | |
|------|-----------|--|---|----|-------|
| 1821 | HDTF-C60V | UHF TV antenna, Ch 21-60 (470-790 MHz). G=17 dB. Green | ✓ | 1 | 87.50 |
| 1820 | HDTF-C60G | UHF TV antenna, Ch 21-60 (470-790 MHz). G=17 dB. Gray | ✓ | 1 | 87.50 |
| 1819 | HDTF-C58V | UHF TV antenna, Ch 21-58 (470-774 MHz). G=17 dB. Green | ✓ | 1 | 87.50 |
| 1818 | HDTF-C48V | UHF TV antenna, Ch 21-48 (470-694 MHz). G=17 dB. Green | ✓ | 1 | 87.50 |
| 1816 | HDTF-C48G | UHF TV antenna, Ch 21-48 (470-694 MHz). G=17 dB. Gray | ✓ | 1 | 87.50 |
| 1811 | HDTCT990V | UHF TV Compact antenna. Ch 21-60 (470-790 MHz). G=13 dB. Green | ✓ | 10 | 48.50 |
| 1813 | HDTN790V | UHF TV Nano antenna. Ch 21-60 (470-790 MHz). G=12 dB. Green | ✓ | 10 | 40.00 |

BIV/V BAND (21-69 Channel) ANTENNAS

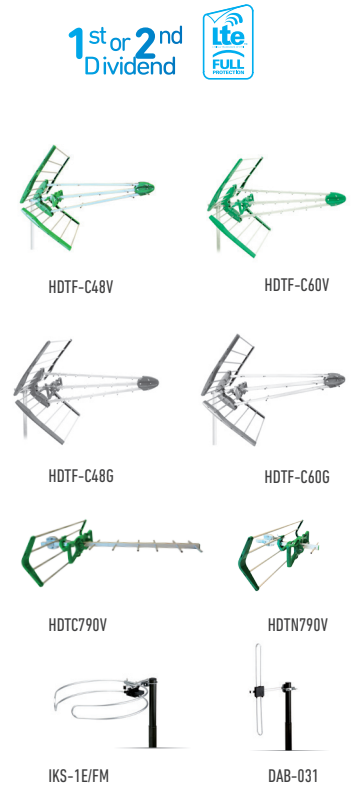
| | | | | | |
|------|----------|--|---|----|-------|
| 1817 | HDTF-C69 | UHF TV antenna. Ch 21-69 (470-862 MHz). G=17,5 dB. Green | ✓ | 1 | 87.50 |
| 1803 | HDT513V | UHF TV Compact antenna. Ch 21-69 (470-862 MHz). G=13 dB. Green | ✓ | 10 | 45.50 |
| 1800 | HDT511V | UHF TV Nano antenna. Ch 21-69 (470-862 MHz). G=12 dB. Green | ✓ | 10 | 38.00 |

BII-FM BAND ANTENNA

| | | | | | |
|------|-----------|---|---|---|-------|
| 1725 | IKS-1E/FM | Radio antenna VHF band. F= 88-108 MHz. G=1 dB | ✓ | 1 | 33.00 |
|------|-----------|---|---|---|-------|

DIGITAL RADIO ANTENNA

| | | | | | |
|------|---------|---|---|---|-------|
| 1728 | DAB-031 | Digital radio antenna. F= 174-240 MHz. G=2 dB | ✓ | 1 | 38.00 |
|------|---------|---|---|---|-------|



Ref. Model Description Availability Quant./Pack. AUD/unit

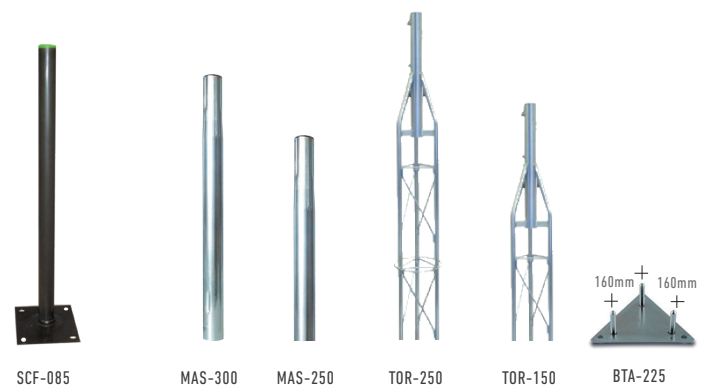
Antenna accessories

SUPPORTS AND ACCESSORIES

| | | | | | |
|------|---------|---|---|----|-------|
| 1888 | KMV-100 | Wind set. Steelwire 25m, accessories cable tie for masts Ø 30-35 mm | ✓ | 1 | 69.00 |
| 1886 | GME-200 | Wall support bracket, length 40 mm for Ø 45 mm masts | ✓ | 10 | 6.20 |
| 1887 | BMA-200 | Wall bracket with 4-bolt plate and polyethylene cap | ✓ | 5 | 14.00 |
| 1911 | GMA-400 | Wall-screwing clamp, length 40 cm for Ø 45 mm masts | ✓ | 10 | 13.50 |
| 1913 | BBT-100 | Tiltable ridge-tale base for 30-35 mm Ø | ✓ | 5 | 22.75 |
| 1067 | SCF-085 | Ground-fixing "column" type. Height 90cm. Pipe of Ø50mm. Base of 200x200 mm | ✓ | 1 | 52.50 |
| 1949 | BAP-200 | Hooked-support for SCF-085. Base 200x200 mm | ✓ | 1 | 55.00 |
| 3071 | SPA-240 | Wall-fixing "U" type for satellite dishes antennas | ✓ | 1 | 17.00 |

MASTS AND PYLONS

| | | | | | |
|------|---------|---|---|---|--------|
| 1941 | MAS-300 | Plug-in mast 3m length x 40mm Ø. Thickness 2 mm. Zinced steel | ✓ | 4 | 40.00 |
| 1880 | MAS-250 | Plug-in mast 2,5m length x 35mm Ø. Thickness 1,5 mm. Zinced steel | ✓ | 6 | 24.00 |
| 1942 | TOR-250 | Trestle-tower or upper section 2,5m. Adapted for ref.1941 | ✓ | 1 | 161.00 |
| 1944 | TOR-150 | Trestle-tower or upper section 1,5m. Adapted for ref.1941 | ✓ | 1 | 107.00 |
| 1950 | BTA-225 | Screwed, triangular fixed base 225 mm | ✓ | 1 | 31.00 |
| 1876 | BFT-100 | Fixed triangular base 225 mm hooked | ✓ | 1 | 36.00 |



Satellite reception and Mast amplifiers

| Ref. | Model | Description | Availability | Quant./Pack. | AUD/unit |
|------|-------|-------------|--------------|--------------|----------|
|------|-------|-------------|--------------|--------------|----------|

Satellite dishes-offset type. RPA series

PARABOLIC ANTENNAS

| | | | | | | |
|------|---------|---|---|---|--------|---|
| 3065 | RPA-060 | Satellite dish 60 cm Ø. Offset. Galvanised steel. Light grey | ✓ | 1 | 44.00 | N |
| 3067 | RPA-080 | Satellite dish 80 cm Ø. Offset. Galvanised steel. Light grey | ✓ | 1 | 70.00 | N |
| 3069 | RPA-100 | Satellite dish 100 cm Ø. Offset. Galvanised steel. Light grey | ✓ | 1 | 167.00 | N |
| 3060 | RPA-120 | Satellite dish 120 cm Ø. Offset. Galvanised steel. Light grey | ✓ | 1 | 230.00 | N |



RPA-060

| Ref. | Model | Description | Availability | Quant./Pack. | AUD/unit |
|------|-------|-------------|--------------|--------------|----------|
|------|-------|-------------|--------------|--------------|----------|

LNBs. UEU series

LNBs OFFSET

| | | | | | | |
|------|----------|----------------------------------|---|---|-------|---|
| 1113 | UEU-121K | LNB Universal 1 output. G= 58 dB | ✓ | 5 | 9.50 | N |
| 3083 | UEU-221K | LNB Twin 2 outputs. G= 58 dB | ✓ | 5 | 29.00 | N |
| 1112 | UEU-421K | LNB Quad 4 outputs. G= 58 dB | ✓ | 5 | 73.50 | N |
| 1114 | UEU-124K | LNB Quattro 4 outputs. G= 58 dB | ✓ | 5 | 30.50 | N |



UEU-121K



UEU-221K



UEU-421K



UEU-124K

| Ref. | Model | Description | Availability | Quant./Pack. | AUD/unit |
|------|-------|-------------|--------------|--------------|----------|
|------|-------|-------------|--------------|--------------|----------|

Mast amplifiers SBA series

1 INPUT UHF

| | | | | | | |
|------|------------|---|---|---|-------|---|
| 1225 | SBA100-C69 | 1 UHF (470-862 MHz) input. G= 40 dB | ✓ | 5 | 40.00 | N |
| 1227 | SBA100-C60 | 1 UHF (470-790 MHz) input. G= 40 dB. 1st dividend | ✓ | 5 | 40.00 | N |
| 1228 | SBA100-C48 | 1 UHF (470-694 MHz) input. G= 40 dB. 2nd dividend | ✓ | 5 | 40.00 | N |



2 INPUTS (UHF-UHF)

| | | | | | | |
|------|------------|--|-------|---|-------|---|
| 1294 | SBA101-C69 | 2 UHF-UHF (470-862 MHz) inputs. G= 36 dB | April | 5 | 52.50 | N |
| 1295 | SBA101-C60 | 2 UHF-UHF (470-790 MHz) inputs. G= 36 dB. 1st dividend | April | 5 | 52.50 | N |
| 1296 | SBA101-C48 | 2 UHF-UHF (470-694 MHz) inputs. G= 36 dB. 2nd dividend | April | 5 | 52.50 | N |



SBA100

2 INPUTS (UHF-BI/DAB/BIII)

| | | | | | | |
|------|------------|--|-------|---|-------|---|
| 1300 | SBA102-C69 | 2 UHF-BI/DAB/BIII (470-862 MHz) inputs. UHF (25dB)-BI/DAB/BIII (-1 dB) | April | 5 | 52.50 | N |
| 1301 | SBA102-C60 | 2 UHF-BI/DAB/BIII (470-790 MHz) in. UHF (25dB)-BI/DAB/BIII (-1 dB). 1st divid. | April | 5 | 52.50 | N |
| 1302 | SBA102-C48 | 2 UHF-BI/DAB/BIII (470-694 MHz) in. UHF (25dB)-BI/DAB/BIII (-1 dB). 2nd divid. | April | 5 | 52.50 | N |



SBA101

2 INPUTS (UHF-SAT)

| | | | | | | |
|------|------------|--|-------|---|-------|---|
| 1306 | SBA190-C69 | 2 UHF-SAT (470-862 MHz) inputs. UHF (35dB)-SAT (-2 dB) | April | 5 | 55.00 | N |
| 1307 | SBA190-C60 | 2 UHF-SAT (470-790 MHz) inputs. UHF (35dB)-SAT (-2 dB). 1st divid. | April | 5 | 55.00 | N |
| 1308 | SBA190-C48 | 2 UHF-SAT (470-694 MHz) inputs. UHF (35dB)-SAT (-2 dB). 2nd divid. | April | 5 | 55.00 | N |

| Ref. | Model | Description | Availability | Quant./Pack. | AUD/unit |
|------|-------|-------------|--------------|--------------|----------|
|------|-------|-------------|--------------|--------------|----------|

Power supply for mast amplifier. APB series

POWER SUPPLY "MICRO" SIZE

| | | | | | | |
|------|-----------|---------------------------------------|-------|----|-------|---|
| 3436 | APB-112-M | Switch mode +12 Vdc. 100mA. 1 output | April | 10 | 47.00 | N |
| 3437 | APB-224-M | Switch mode +24 Vdc. 100mA. 2 outputs | April | 10 | 45.00 | N |



APB-112-M
APB-224-M

¡MICRO!



POWER SUPPLY

| | | | | | | |
|------|---------|---------------------------------------|-------|----|-------|---|
| 3432 | APB-124 | Switch mode +24 Vdc. 100mA. 2 outputs | ✓ | 10 | 29.00 | N |
| 3438 | APB-424 | Switch mode +24 Vdc. 100mA. 4 outputs | April | 10 | 47.00 | N |



APB-124

| Ref. | Model | Description | Availability | Quant./Pack. | AUD/unit |
|------|-------|-------------|--------------|--------------|----------|
|------|-------|-------------|--------------|--------------|----------|

Mast amplifier + Power supply kits

MAST AMPLIFIER+POWER SUPPLY

| | | | | | | |
|------|-------------|--|-------|---|-------|---|
| 1223 | JSBA100-C69 | Mast amplifier SBA100-C69 + Power supply APB-124 | March | 5 | 60.00 | N |
| 1222 | JSBA100-C60 | Mast amplifier SBA100-C60 + Power supply APB-124 | March | 5 | 60.00 | N |
| 1224 | JSBA100-C48 | Mast amplifier SBA100-C48 + Power supply APB-124 | March | 5 | 60.00 | N |



Broadband amplifiers

| Ref. | Model | Description | Availability | Quant./Pack. | AUD/unit |
|------|-------|-------------|--------------|--------------|----------|
|------|-------|-------------|--------------|--------------|----------|

Terrestrial & Satellite programmable amplification headends

ONE SERIES

| | | | | | |
|------|---------------------|--|---|---|--------|
| 2844 | ONE-SAT (AFP-292) | Programmable head-end. 470-862/790 MHz 6 terrestrial inputs + 2 satellite inputs 2 switchable outputs: a) TV (123 dBμV) + SAT (116 dBμV) ; b) TV (118 dBμV) + SAT1 (116 dBμV) and TV (118 dBμV) + SAT2 | ✓ | 1 | 550.00 |
| 2845 | ONE-118 (AFP-201) | Programmable head-end. 470-862/790 MHz 5 terrestrial inputs. 1 output (118 dBμV) | ✓ | 1 | 490.00 |
| 2849 | ONE-HOME (AFP-HOME) | Programmable head-end. BI/FM and UHF bands 2 terrestrial inputs. 1 output (113 dBμV) | ✓ | 1 | 385.00 |

1st or 2nd Dividend 



ONE-SAT



ONE-HOME

| Ref. | Model | Description | Availability | Quant./Pack. | AUD/unit |
|------|-------|-------------|--------------|--------------|----------|
|------|-------|-------------|--------------|--------------|----------|

Broadband Amplifiers Terrestrial and Satellite

NBS-800 SERIES (High power)

| | | | | | |
|------|---------|---|---|---|--------|
| 3531 | NBS-801 | 1 input, 1 output VHF/UHF (Gain= 42 dB) ; (Output level= 118 dBμV) | ✓ | 1 | 119.00 |
| 3532 | NBS-804 | 4 inputs, 1 output BI/FM - BIII/DAB - 2xUHF (Gain= 42 - 42 - (2x)45 dB) ; (Output level= 118 dBμV) | ✓ | 1 | 155.00 |
| 3534 | NBS-895 | 5 inputs, 1 output BI/FM - BIII/DAB - 2xUHF - IF Sat (Gain = 42 - 42 - (2x)45 - 40 dB) ; (Output level TV= 118 dBμV ; IF= 120 dBμV) | ✓ | 1 | 189.00 |

1^{er} or 2^o Dividend 



NBS-800

NBS-600 SERIES (Medium power)

| | | | | | |
|------|---------|---|---|---|--------|
| 3529 | NBS-604 | 4 inputs, 1 output BI/FM - BIII/DAB - 2xUHF (Gain = 36 - 36 - (2x)39 dB) ; (Output level = 112 dBμV) | ✓ | 1 | 119.00 |
| 3530 | NBS-695 | 5 inputs, 1 output BI/FM - BIII/DAB - 2xUHF - IF Sat (Gain = 36 - 36 - (2x)39 - 34 dB) ; (Output level TV= 112 dBμV ; IF= 114 dBμV) | ✓ | 1 | 160.00 |



NBS-600

NBS-200 SERIES (Low power)

| | | | | | |
|------|---------|---|---|---|-------|
| 3516 | NBS-204 | 4 inputs, 1 output BI - FM - BIII/DAB - UHF (Gain = 31 - 31 - 31 - 33 dB) ; (Output level= 96 dBμV) | ✓ | 1 | 72.00 |
|------|---------|---|---|---|-------|

| Ref. | Model | Description | Availability | Quant./Pack. | AUD/unit |
|------|-------|-------------|--------------|--------------|----------|
|------|-------|-------------|--------------|--------------|----------|

IF-Sat Combiner/Amplifier

AFI-840

| | | | | | |
|------|---------|--|---|---|--------|
| 1164 | AFI-840 | 1 satellite output, 1 terrestrial output VHF/UHF - IF Sat (Gain = 32-40 dB - [-]2 dB) ; (Output level= 120 dBμV) | ✓ | 1 | 140.00 |
|------|---------|--|---|---|--------|



AFI-840

SZB Amplification headend

Ref. Model Description Availability Quant./Pack. AUD/unit

Single channel amplifiers

SZB SERIES

| | | | | | |
|------|---------|---|---|---|--------|
| 2294 | SZB-129 | BII (FM) amplifier. Gain = 57 dB ; Output level = 2x 113 dBµV | ✓ | 1 | 110.00 |
| 2293 | SZB-128 | BII (FM) amplifier. Gain = 30 dB ; Output level = 2x 113 dBµV | ✓ | 1 | 90.00 |
| 3160 | SZB-168 | Digital radio amplifier. Gain = 53 dB ; Output level = 2x 113 dBµV | ✓ | 1 | 120.00 |
| 3152 | SZB-139 | BIII amplifier. Gain = 56 dB ; Output level = 2x 121 dBµV | ✓ | 1 | 130.00 |
| 2246 | SZB-148 | UHF amplifier. Adjacent channel. G=52 dB ; Output level = 2x 121 dBµV | ✓ | 1 | 130.00 |
| 2248 | SZB-180 | TV multichannel amplifier 2, 3 and 4 UHF channels. G = 60 dB | ✓ | 1 | 150.00 |
| 1346 | SZB-190 | IF Sat Combiner/Amplifier. G = 33-40 dB ; Output level = 120 dBµV | ✓ | 1 | 210.00 |

POWER SUPPLY

| | | | | | |
|------|---------|------------------------------------|---|---|--------|
| 2228 | SZB-212 | Switching Power supply 24 Vdc ; 2A | ✓ | 1 | 190.00 |
|------|---------|------------------------------------|---|---|--------|

ACCESSORIES

| | | | | | |
|------|---------|---|---|----|--------|
| 2225 | BAS-919 | Base plate for 9 modules | ✓ | 1 | 60.00 |
| 2222 | BAS-913 | Base plate for 3 modules | ✓ | 1 | 45.00 |
| 2224 | COF-809 | Housing for one base plate BAS-919 (420x346x180 mm) | ✓ | 1 | 179.50 |
| 2247 | PZB-453 | Z plug bridge F-F (45.3 mm) | ✓ | 10 | 5.00 |
| 2221 | CTF-075 | 75Ω load plug | ✓ | 10 | 0.50 |

1st or 2nd Dividend



SZB-100

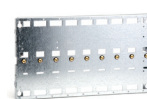
SZB-190



SZB-212



BAS-913



BAS-919



COF-809

Stand alone modulators

Ref. Model Description Availability Quant./Pack. AUD/unit

Stand alone modulators. MAC Series

HD MODULATORS

| | | | | | |
|------|-------------|--|---|---|----------|
| 4493 | MAC-HD | AV → DVB-T / DVB-C e IP 4 video inputs (2x) CVBS, HDMI, HD-SDI. USB Video player | ✓ | 1 | 2,250.00 |
| 4482 | MAC-HOME HD | AV → DVB-T and DVB-C 2 video inputs CVBS, HDMI. USB Video player | ✓ | 1 | 1,650.00 |
| 3030 | MAW-300 | AV → DVB-T Video inputs CVBS, HDMI | ✓ | 1 | 750.00 |

MODULATORS

| | | | | | |
|------|----------|--|---|---|----------|
| 4488 | MAC-HOME | AV → DVB-T Video inputs CVBS, S-VIDEO, Y Pb Pr, RGB, USB. USB Video player | ✓ | 1 | 645.00 |
| 4485 | MAC-401 | AV → DVB-T Video inputs 4x CVBS | ✓ | 1 | 1,725.00 |



MAC-HD



MAC-HOME HD



MAW-300



MAC-HOME



MAC-401

Ref. Model Description Availability Quant./Pack. AUD/unit

Analogue modulator

| | | | | | |
|------|---------|--|---|---|-------|
| 3029 | MAW-200 | Home double side-band stand alone modulator 45-862 MHz | ✓ | 1 | 85.00 |
|------|---------|--|---|---|-------|



MAW-200

ClassA Headend

| Ref. | Model | Description | Availability | Quant./Pack. | AUD/unit |
|---|---------|---|--------------|--------------|----------|
| ClassA modules | | | | | |
| DIGITAL TRANSMODULATION WITH TS PROCESSING | | | | | |
| 4098 | MTI-900 | DVB-S/S2 to DVB-T transmodulator. Common interface | ✓ | 1 | 1,995.00 |
| 4099 | MTI-800 | DVB-S/S2 to DVB-T transmodulator | ✓ | 1 | 2,500.00 |
| 4020 | MDI-910 | DVB-S/S2 to DVB-C transmodulator. Common interface | ✓ | 1 | 900.00 |
| 4021 | TDI-900 | DVB-T to DVB-C transmodulator | ✓ | 1 | 1,100.00 |
| HD MODULATORS | | | | | |
| 3854 | MHD-201 | Audio/Video to DVB-T / DVB-C and IP modulator Inputs (2x) CVBS, HDMI, HD-SDI | ✓ | 1 | 2,900.00 |
| 3855 | MHD-202 | Audio/Video to DVB-T / DVB-C and IP modulator Inputs (2x) HDMI | ✓ | 1 | 2,350.00 |
| CHANNEL PROCESSOR (digital) | | | | | |
| 3842 | TPC-010 | Terrestrial/Cable TV channel processor. IF SAW filtering DVB-T/T2 ,, DVB-C ,, B/G ,, D/K ,, I ,, L | ✓ | 1 | 530.00 |
| REGENERATOR TV DIGITAL | | | | | |
| 4026 | TGT-100 | DVB-T to DVB-T regenerator | ✓ | 1 | 850.00 |
| TV DIGITAL TO ANALOGUE TRANSMODULATION PROCESSOR | | | | | |
| 4096 | SRC-111 | Digital Receiver with PCMCIA. Mono. B/G/D/I/L. Basic unit. VSB. IKUSUP | ✓ | 1 | 820.00 |
| 4084 | SRF-011 | Digital Receiver FTA. Mono. B/G/D/I/L. Basic unit | ✓ | 1 | 780.00 |
| MODULATORS | | | | | |
| 3849 | MCP-801 | Twin Modulator. Mono. BG/DK/I/L | ✓ | 1 | 490.00 |
| 3851 | MCP-811 | Twin Modulator. Mono. BG | ✓ | 1 | 535.00 |
| IF-IF CONVERTER | | | | | |
| 3844 | SPC-030 | Triple IF-IF converter | ✓ | 1 | 600.00 |
| POWER SUPPLY | | | | | |
| 4492 | CFP-900 | Power Supply (12/24) 9A. 100-240 Vac | ✓ | 1 | 330.00 |
| MULTIPLEXOR | | | | | |
| 4433 | AMX-400 | Combiner ClassA. 4x47-860 MHz | ✓ | 1 | 250.00 |
| POWER AMPLIFIERS | | | | | |
| 4427 | HPA-125 | Amplifier module 47-862 MHz. Output level 125 dBμV | ✓ | 1 | 360.00 |
| 4437 | HPA-920 | IF-Sat Combiner/Amplifier 950-2150 MHz. Output level 120 dBμV | ✓ | 1 | 215.00 |



MTI-900

MTI-800



MHD-202

MHD-201



TPC-010

TGT-100



SRC-111

MCP-811



SRF-011

SPC-030



MDI-910

TDI-900



CFP-900

AMX-400



HPA-125

HPA-920



ClassA Headend

ClassA Headend ADVANCED

Ref. Model Description Availability Quant./Pack. AUD/unit

ClassA modules with IKUNET bus and Common interface

TRANSCODER / TRANSMODULATOR

| | | | | | | |
|------|---------|--|-------|---|----------|---|
| 3861 | HTL-TRX | DVB-T/T2 ; DVB-S/S2 ; DVB-C to DVB-T and DVB-C transmodul. Common interface MPEG4 to MPEG2 transcoder 2 inputs or 1 input + loop through | March | 1 | 2,800.00 | N |
| 3860 | HTL-STC | DVB-T/T2 ; DVB-S/S2 ; DVB-C to DVB-T and DVB-C transmodul. Common interface 2 inputs or 1 input + loop through | March | 1 | 3,675.00 | N |
| 3859 | HTL-TT2 | DVB-T/T2 to DVB-T and DVB-C transmodulator MPEG4 to MPEG2 transcoder 1 input (dual tuner) | ✓ | 1 | 2,100.00 | N |
| 3858 | HTL-ST2 | DVB-S/S2 to DVB-T ; DVB-C transmodulator. Common interface Inputs: 2 polarities or 1 polarity + loop through | ✓ | 1 | 1,750.00 | N |



HTL-TRX



HTL-STC



HTL-TT2



HTL-ST2

Ref. Model Description Availability Quant./Pack. AUD/unit

ClassA Accessories

19" RACK CABINETS

| | | | | | | |
|------|---------|--|---|---|----------|---|
| 2174 | ARE-120 | Panel height 12 Units | ✓ | 1 | 1,280.00 | N |
| 2169 | ARE-220 | Panel height 22 Units | ✓ | 1 | 2,135.00 | N |
| 2171 | ARE-320 | Panel height 32 Units | ✓ | 1 | 2,800.00 | N |
| 2172 | ARE-420 | Panel height 42 Units | ✓ | 1 | 2,975.00 | N |
| 4280 | SMR-601 | 19" - 6 U Rack Frame 7 modules | ✓ | 1 | 170.00 | |
| 4281 | PMR-601 | 6 U Module fixing plate | ✓ | 1 | 20.00 | |
| 4282 | OMR-601 | 6 U - 12E Blank panel | ✓ | 1 | 20.00 | |
| 4411 | BAS-900 | Base Plate capacity 9 modules. Dimensions: 563x257x24 mm | ✓ | 1 | 34.35 | |
| 4403 | BAS-700 | Base Plate capacity 7 modules. Dimensions: 441x257x24 mm | ✓ | 1 | 30.00 | |
| 4402 | COF-700 | Housing for BAS-700. Dimensions: 430x341x258 mm | ✓ | 1 | 80.50 | |
| 4070 | SPI-300 | ClassA Programming controller | ✓ | 1 | 350.00 | |



ARE-xxx



SMR-601



PMR-601

OMR-601



SPI-300

Ikusi Flow Headend

Ref. Model Description Availability Quant./Pack. AUD/unit

Ikusi Flow

| | | | |
|------------|--------------------|---|---------|
| Ikusi Flow | Digital TV Headend | ✓ | consult |
|------------|--------------------|---|---------|



Distribution elements

Ref. Model Description Availability Quant./Pack. AUD/unit

Indoor tap-offs. UDM series

1 OUTPUT

| | | | | | | |
|------|---------|---|---|----|------|---|
| 2052 | UDM-110 | 1-Way shielded tap-off (10dB)(2400 MHz) | ✓ | 10 | 6.00 | N |
| 2053 | UDM-115 | 1-Way shielded tap-off (15dB)(2400 MHz) | ✓ | 10 | 6.00 | N |
| 2054 | UDM-120 | 1-Way shielded tap-off (20dB)(2400 MHz) | ✓ | 10 | 6.00 | N |
| 2055 | UDM-125 | 1-Way shielded tap-off (25dB)(2400 MHz) | ✓ | 10 | 6.00 | N |



UDM-115

2 OUTPUTS

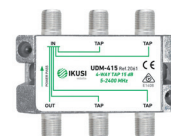
| | | | | | | |
|------|---------|---|---|----|------|---|
| 2056 | UDM-210 | 2-Way shielded tap-off (10dB)(2400 MHz) | ✓ | 10 | 6.50 | N |
| 2057 | UDM-215 | 2-Way shielded tap-off (15dB)(2400 MHz) | ✓ | 10 | 6.50 | N |
| 2058 | UDM-220 | 2-Way shielded tap-off (20dB)(2400 MHz) | ✓ | 10 | 6.50 | N |
| 2059 | UDM-225 | 2-Way shielded tap-off (25dB)(2400 MHz) | ✓ | 10 | 6.50 | N |



UDM-215

4 OUTPUTS

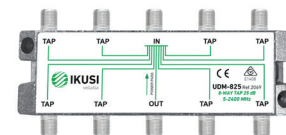
| | | | | | | |
|------|---------|---|---|----|------|---|
| 2060 | UDM-410 | 4-Way shielded tap-off (10dB)(2400 MHz) | ✓ | 10 | 8.50 | N |
| 2061 | UDM-415 | 4-Way shielded tap-off (15dB)(2400 MHz) | ✓ | 10 | 8.50 | N |
| 2062 | UDM-420 | 4-Way shielded tap-off (20dB)(2400 MHz) | ✓ | 10 | 8.50 | N |
| 2063 | UDM-425 | 4-Way shielded tap-off (25dB)(2400 MHz) | ✓ | 10 | 8.50 | N |



UDM-415

6 OUTPUTS

| | | | | | | |
|------|---------|---|---|----|-------|---|
| 2064 | UDM-615 | 6-Way shielded tap-off (10dB)(2400 MHz) | ✓ | 10 | 10.00 | N |
| 2065 | UDM-620 | 6-Way shielded tap-off (20dB)(2400 MHz) | ✓ | 10 | 10.00 | N |
| 2066 | UDM-625 | 6-Way shielded tap-off (25dB)(2400 MHz) | ✓ | 10 | 11.50 | N |



UDM-625

8 OUTPUTS

| | | | | | | |
|------|---------|---|---|----|-------|---|
| 2067 | UDM-815 | 8-Way shielded tap-off (16dB)(2400 MHz) | ✓ | 10 | 12.50 | N |
| 2068 | UDM-820 | 8-Way shielded tap-off (20dB)(2400 MHz) | ✓ | 10 | 12.50 | N |
| 2069 | UDM-825 | 8-Way shielded tap-off (25dB)(2400 MHz) | ✓ | 10 | 12.50 | N |

Ref. Model Description Availability Quant./Pack. AUD/unit

Indoor Splitters. UDF series

| | | | | | | |
|------|---------|---|---|----|-------|---|
| 2075 | UDF-205 | 2-Way splitter (2400 MHz). Power Passing in all ports | ✓ | 10 | 6.00 | N |
| 2076 | UDF-307 | 3-Way splitter (2400 MHz). Power Passing in all ports | ✓ | 10 | 6.00 | N |
| 2077 | UDF-408 | 4-Way splitter (2400 MHz). Power Passing in all ports | ✓ | 10 | 8.50 | N |
| 2078 | UDF-612 | 6-Way splitter (2400 MHz). Power Passing in all ports | ✓ | 10 | 14.00 | N |
| 2079 | UDF-813 | 8-Way splitter (2400 MHz). Power Passing in all ports | ✓ | 10 | 16.00 | N |



UDF-205



UDF-307

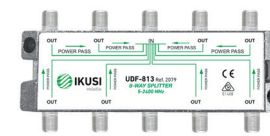
Ref. Model Description Availability Quant./Pack. AUD/unit

TV-IF combiner

| | | | | | | |
|------|---------|------------------|---|---|------|--|
| 3372 | DMS-300 | RTV-2IF Combiner | ✓ | 1 | 7.70 | |
|------|---------|------------------|---|---|------|--|



UDF-408



UDF-813



DMS-300

Apartment amplifiers

Ref. Model Description Availability Quant./Pack. AUD/unit

Apartment amplifiers. ATP series

1 TERR / SAT / VR INPUT ; 1 OUTPUT

| | | | | | | |
|------|------------|---|-------|---|-------|---|
| 3588 | ATP190-C69 | 47-862 MHz (18 dB) / 950-2150 MHz (22 dB) / 5-30 MHz | April | 1 | 65.00 | N |
| 3589 | ATP190-C60 | 47-790 MHz (18 dB) / 950-2150 MHz (22 dB) / 5-30 MHz 1st dividend | April | 1 | 65.00 | N |
| 3590 | ATP190-C48 | 47-694 MHz (18 dB) / 950-2150 MHz (22 dB) / 5-30 MHz 2nd dividend | April | 1 | 65.00 | N |

1 TERR / SAT / VR INPUT ; 2 OUTPUT

| | | | | | | |
|------|------------|---|-------|---|-------|---|
| 3591 | ATP290-C69 | 47-862 MHz (18 dB) / 950-2150 MHz (22 dB) / 5-30 MHz | April | 1 | 70.00 | N |
| 3592 | ATP290-C60 | 47-790 MHz (18 dB) / 950-2150 MHz (22 dB) / 5-30 MHz 1st dividend | April | 1 | 70.00 | N |
| 3593 | ATP290-C48 | 47-694 MHz (18 dB) / 950-2150 MHz (22 dB) / 5-30 MHz 2nd dividend | April | 1 | 70.00 | N |

1 TERR / SAT / VR INPUT ; 4 OUTPUT

| | | | | | | |
|------|------------|---|-------|---|-------|---|
| 3597 | ATP490-C69 | 47-862 MHz (18 dB) / 950-2150 MHz (22 dB) / 5-30 MHz | April | 1 | 75.00 | N |
| 3598 | ATP490-C60 | 47-790 MHz (18 dB) / 950-2150 MHz (22 dB) / 5-30 MHz 1st dividend | April | 1 | 75.00 | N |
| 3599 | ATP490-C48 | 47-694 MHz (18 dB) / 950-2150 MHz (22 dB) / 5-30 MHz 2nd dividend | April | 1 | 75.00 | N |

1 TERR INPUT ; 2 OUTPUTS

| | | | | | | |
|------|------------|---------------------------------|-------|---|-------|---|
| 3583 | ATP200-C69 | 47-862 MHz (25 dB) | April | 5 | 40.00 | N |
| 3434 | ATP200-C60 | 47-790 MHz (25 dB) 1st dividend | April | 5 | 40.00 | N |
| 3584 | ATP200-C48 | 47-694 MHz (25 dB) 2nd dividend | April | 5 | 40.00 | N |

1 TERR INPUT ; 4 OUTPUTS

| | | | | | | |
|------|------------|---------------------------------|-------|---|-------|---|
| 3594 | ATP400-C69 | 47-862 MHz (22 dB) | April | 1 | 52.50 | N |
| 3595 | ATP400-C60 | 47-790 MHz (22 dB) 1st dividend | April | 1 | 52.50 | N |
| 3596 | ATP400-C48 | 47-694 MHz (22 dB) 2nd dividend | April | 1 | 52.50 | N |

4 TERR INPUTS ; 1 OUTPUT

| | | | | | | |
|------|------------|--|-------|---|-------|---|
| 3585 | ATP104-C69 | BI-FM-BIII/DAB-UHF (31 dB) 47-862 MHz | April | 1 | 49.00 | N |
| 3586 | ATP104-C60 | BI-FM-BIII/DAB-UHF (22 dB) 47-790 MHz 1st dividend | April | 1 | 49.00 | N |
| 3587 | ATP104-C48 | BI-FM-BIII/DAB-UHF (22 dB) 47-694 MHz 2nd dividend | April | 1 | 49.00 | N |



ATP290



ATP200



ATP400

Distribution accessories

Ref. Model Description Availability Quant./Pack. AUD/unit

First and second dividends filters

| | | | | | | |
|------|----------|--|---------|---|-------|---|
| 1435 | FLTE601 | Filter with 2 options of cut-off: channel 59 and channel 60. Mast installation | ✓ | 1 | 50.00 | |
| 1436 | FLTE-481 | Filter channel 48 (470-694 MHz) for indoor | Consult | 1 | 30.00 | N |
| 1437 | FLTE-482 | Filter channel 48 (470-694 MHz) for mast | Consult | 1 | 39.00 | N |



FLTE601



FLTE-482



FLTE-481

Line extender amplifiers

Ref. Model Description Availability Quant./Pack. AUD/unit

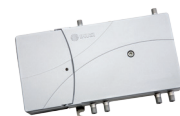
Extension amplifiers

TAE SERIES

| | | | | | | |
|------|---------|--|---|---|--------|--|
| 3249 | TAE1125 | Line extender (RW 5-55Mhz). G=35 dB. 230-240 V. 124dBµV | ✓ | 1 | 450.00 | |
| 3264 | TAE1120 | Line extender (RW 5-55Mhz). G=35 dB. 230-240 V. 120dBµV | ✓ | 1 | 400.00 | |
| 3263 | TAE1118 | Line extender (RW 5-55Mhz). G=35 dB. 230-240 V. 118 dBµV | ✓ | 1 | 350.00 | |

SAE SERIES

| | | | | | | |
|------|---------|---|---|---|--------|--|
| 3500 | SAE-912 | Line extender. IF-Terrestrial. 35 MHz R.W. Mains | ✓ | 1 | 350.00 | |
| 3503 | SAE-916 | Line extender. IF-Terrestrial. 65 MHz active R.W. Mains | ✓ | 1 | 350.00 | |
| 3507 | SAE-920 | Line extender. Dual IF-Terrestrial. Mains | ✓ | 1 | 370.00 | |



TAE1000



SAE-912/916



SAE-920

Distribution accessories

| Ref. | Model | Description | Availability | Quant./Pack. | AUD/unit |
|------------------------|---------|---|--------------|--------------|----------|
| TV Wall outlets | | | | | |
| 2472 | ARTU009 | Individual outlet. DC Passing SAT output. TV/RD - SAT IF | ✓ | 12 | 5.40 |
| 2736 | ARTU001 | Individual outlet | ✓ | 12 | 4.90 |
| 2735 | ARTU000 | Bridged (Individual outlet) | ✓ | 12 | 4.70 |
| 2740 | ARTU058 | End outlet. TV+RD - SAT. DC Passing SAT output. Without coverplate | ✓ | 60 | 5.00 |
| 2473 | ARTU059 | End outlet. TV+RD - SAT. Without coverplate | ✓ | 60 | 4.70 |
| 2474 | ARTU900 | Cascade(END). DC Passing SAT output. TV/RD - SAT IF. With coverplate | ✓ | 12 | 8.75 |
| 2475 | ARTU901 | Cascade. DC Passing SAT output. TV/RD - SAT IF. With coverplate | ✓ | 12 | 10.00 |
| 2476 | ARTU902 | Cascade. DC Passing SAT output. TV/RD - SAT IF. With coverplate | ✓ | 12 | 10.20 |
| 2477 | ARTU903 | Cascade. DC Passing SAT output. TV/RD - SAT IF. With coverplate | ✓ | 12 | 9.50 |
| 1460 | ABT-210 | Surface mounting frame outlet | ✓ | 50 | 1.70 |
| 5360 | PSE-300 | End outlet with frame and coverplate. DC Passing SAT output. TV-RD-SAT IF | ✓ | 10 | 7.00 |



| Ref. | Model | Description | Availability | Quant./Pack. | AUD/unit |
|-----------------------|------------|---|--------------|--------------|----------|
| Coaxial cables | | | | | |
| 2522 | CCI-175 | Cu-Cu. PVC White. (16,6 dB / 862 MHz & 27.5 dB/2150 MHz) | ✓ | 400 m | 0.90 |
| 2521 | CCI-179 | Cu-Al. PVC White. (18 dB / 862 MHz & 29.8 dB / 2150 MHz) | ✓ | 400 m | 0.60 |
| 2506 | CCH-175 | Alog free. Cu-Cu. PVC White. (16.6 dB /862 MHz & 27.5 dB / 2150 MHz) | ✓ | 400 m | 1.00 |
| 2016 | CCI-174 | Cu-Cu. PVC Black. (16.6 dB / 862 MHz & 27.5 dB / 2150 MHz) | ✓ | 400 m | 1.00 |
| 2493 | 17VATCAPH1 | Copper-plated steel. PVC White. (6,8mmø. Al-Al.18dB (862 MHz) ; 29dB (2150 MHz) | ✓ | 400 m | 0.90 |
| 2505 | CCT-171 | Cu-Al Black PE (18 dB / 862 MHz & 29.8 dB / 2150 MHz) | ✓ | 400 m | 0.80 |
| 2514 | CCT-125 | Cu-Al. PE Black (13.1 dB / 862 MHz & 27.5 dB / 2150 MHz) | ✓ | 200 m | 2.20 |



| Ref. | Model | Description | Availability | Quant./Pack. | AUD/unit |
|-------------------|---------|---|--------------|--------------|----------|
| Connectors | | | | | |
| 2377 | CFR-680 | "F" male connector. 6.5 diameter screw-on f plug | ✓ | 100 | 0.25 |
| 1502 | CAD | 9.5 mm diameter male elbow plug | ✓ | 50 | 0.50 |
| 1503 | CHD-950 | 9.5 mmdiameter female elbow plug | ✓ | 50 | 0.50 |
| 3133 | CCF-111 | RG11 compression connector for CCT-125 cable | ✓ | 25 | 2.00 |
| 3131 | CFC-600 | RG6 compression connector for remaining cables | ✓ | 50 | 1.15 |
| 2513 | CTF-125 | RG11 crimpable connector for CCT-125 cable | ✓ | 25 | 4.50 |
| 2368 | CTF-190 | RG6 crimpable connector for remaining cables | ✓ | 50 | 0.80 |
| 2379 | BCF-060 | 60V AC/DC block "F" type male-female connector | ✓ | 10 | 4.50 |
| 2221 | CTF-075 | 75Ω "F" type load | ✓ | 10 | 0.50 |
| 1640 | SAI-311 | Female-female barrel (brass) ."F" type | ✓ | 10 | 1.75 |
| 3105 | FAV-020 | Variable attenuator 0-20dB. Constant impedance. 75Ω | ✓ | 1 | 10.00 |
| 1674 | AV-020 | Variable attenuator. Constant impedance. VHF/UHF (0-20dB).IEC | ✓ | 10 | 10.50 |
| 1408 | V-2T | Splitter for VCR (2TV). IEC | ✓ | 10 | 15.75 |
| 3241 | IFC-215 | Power inserter (1A/24V). 10-2150 MHz. "F" type female connector | ✓ | 1 | 16.80 |
| 1107 | FIS-950 | 950-2150 MHz IF amplifier | ✓ | 1 | 28.00 |
| 1847 | UCF-170 | Hex crimp tool for CTF-125 and CTF-190 connectors | ✓ | 1 | 99.50 |
| 3132 | UCR-600 | Compression tool for CCF-111 and CFC-600 connectors | ✓ | 1 | 119.00 |



Optical distribution system

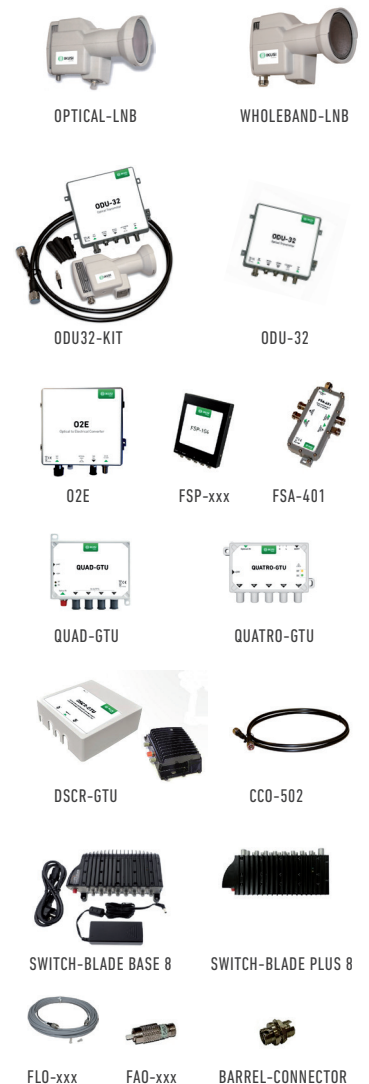
| Ref. | Model | Description | Availability | Quant./Pack. | AUD/unit |
|----------------------------------|---------|---------------------------------------|--------------|--------------|----------|
| 47-2150 MHz Optical fiber | | | | | |
| 4915 | FTD-420 | Optical transmitter 4 mw 47/2150 MHz | ✓ | 1 | 965.00 |
| 4914 | FRD-400 | Optical receiver 47/2150 MHz.119 dBμV | ✓ | 1 | 580.00 |
| 4904 | FSP-302 | 2x Optical splitter | ✓ | 1 | 335.00 |
| 4905 | FSP-303 | 3x Optical splitter | ✓ | 1 | 450.00 |
| 4916 | FSP-304 | 4x Optical splitter | ✓ | 1 | 510.00 |
| 4918 | FSP-306 | 6x Optical splitter | ✓ | 1 | 720.00 |



| Ref. | Model | Description | Availability | Quant./Pack. | AUD/unit |
|----------------------------------|---------|--|--------------|--------------|----------|
| 45-2600 MHz Optical fiber | | | | | |
| 4895 | FRD-100 | Optical receiver 1290-1600 nm (45-2600 MHz) (SC/APC) | April | 1 | 265.00 N |
| 4896 | FSP-202 | 2x Optical splitter (SC/APC) | ✓ | 1 | 140.00 N |
| 4898 | FSP-204 | 4x Optical splitter (SC/APC) | ✓ | 1 | 220.00 N |
| 4897 | FSP-208 | 8x Optical splitter (SC/APC) | ✓ | 1 | 350.00 N |
| 4899 | FSP-216 | 16x Optical splitter (SC/APC) | ✓ | 1 | 720.00 N |
| 4892 | FAO-004 | Optical attenuator 3 dB | ✓ | 1 | 29.75 N |
| 4893 | FAO-006 | Optical attenuator 6 dB | ✓ | 1 | 29.75 N |



| Ref. | Model | Description | Availability | Quant./Pack. | AUD/unit |
|--------------------|---------------------|--|--------------|--------------|-----------|
| Optical LNB | | | | | |
| 4956 | OPTICAL-LNB | Optical LNB 1310 nm. 1xSAT 32 receivers. FC/PC. Gain: 72dB. | ✓ | 1 | consult N |
| 4957 | ODU32-KIT | Kit contains, Wholeband LNB, FibreIRS® ODU32, 2m HF Interconnect cable, PSU, weather proof boots for the FC/PC connections | ✓ | 1 | consult N |
| 4955 | WHOLEBAND-LNB | Optical LNB 4 RF polarities outputs. 950-5450 MHz | ✓ | 1 | consult N |
| 4961 | ODU-32 | Sat+Terr optical transmitter | ✓ | 1 | consult N |
| 4962 | FSA-401 | Active optical distributor | ✓ | 1 | consult N |
| 4960 | CCO-502 | Coaxial cable of interconnection 2 meters. 50Ω | ✓ | 1 | consult N |
| 4952 | QUAD-GTU | Optical to RF converter 4 users | ✓ | 1 | consult N |
| 4953 | QUATRO-GTU | Optical to RF converter 4 polarities | ✓ | 1 | consult N |
| 4968 | O2E | Sat+Terr optical receiver 2 outputs | ✓ | 1 | consult N |
| 4967 | DSCR-GTU | Converts optical power to RF power. 2x16 SCR Unicable | ✓ | 1 | consult N |
| 4965 | SWITCH-BLADE BASE 8 | Multiswitch with optical input Base with 8 subscriber outputs | ✓ | 1 | consult N |
| 4964 | SWITCH-BLADE PLUS 8 | Expansion 8 way | ✓ | 1 | consult N |
| 4966 | BARREL CONNECTOR | Adapter FC/PC | ✓ | 1 | consult N |
| 4888 | FSP-102 | Optical splitter (FC/PC). 2 outputs. (2x) 1 m | ✓ | 1 | consult N |
| 4889 | FSP-103 | Optical splitter (FC/PC). 3 outputs. (3x) 1 m | ✓ | 1 | consult N |
| 4890 | FSP-104 | Optical splitter (FC/PC). 4 outputs. (4x) 1 m | ✓ | 1 | consult N |
| 4891 | FSP-108 | Optical splitter (FC/PC). 8 outputs. (8x) 1 m | ✓ | 1 | consult N |
| 4933 | FLO-005 | Optical jumper (FC/PC). 5 meters | ✓ | 1 | consult N |
| 4934 | FLO-010 | Optical jumper (FC/PC). 10 meters | ✓ | 1 | consult N |
| 4935 | FLO-020 | Optical jumper (FC/PC). 20 meters | ✓ | 1 | consult N |
| 4936 | FLO-030 | Optical jumper (FC/PC). 30 meters | ✓ | 1 | consult N |
| 4937 | FLO-040 | Optical jumper (FC/PC). 40 meters | ✓ | 1 | consult N |
| 4938 | FLO-050 | Optical jumper (FC/PC). 50 meters | ✓ | 1 | consult N |
| 4939 | FLO-075 | Optical jumper (FC/PC). 75 meters | ✓ | 1 | consult N |
| 4940 | FLO-100 | Optical jumper (FC/PC). 100 meters | ✓ | 1 | consult N |
| 4946 | FAO-105 | Optical attenuator (FC/PC). 5 dB | ✓ | 1 | consult N |
| 4947 | FAO-110 | Optical attenuator (FC/PC). 10 dB | ✓ | 1 | consult N |
| 4948 | FAO-115 | Optical attenuator (FC/PC). 15 dB | ✓ | 1 | consult N |



Reference list

| Ref. | Model | EAN code | Page | Ref. | Model | EAN code | Page | Ref. | Model | EAN code | Page |
|------|-------------|---------------|------|------|-----------|---------------|------|------|-----------|---------------|------|
| 1067 | SCF-085 | 8435136410676 | 2 | 1819 | HDTF-C58V | 8435136418191 | 2 | 2169 | ARE-220 | 8435136421696 | 7 |
| 1107 | FIS-950 | 8435136411079 | 10 | 1820 | HDTF-C60G | 8435136418207 | 2 | 2171 | ARE-320 | 8435136421719 | 7 |
| 1112 | UEU-421K | 8435136411123 | 3 | 1821 | HDTF-C60V | 8435136418214 | 2 | 2172 | ARE-420 | 8435136421726 | 7 |
| 1113 | UEU-121K | 8435136411130 | 3 | 1847 | UCF-170 | 8435136418474 | 10 | 2174 | ARE-120 | 8435136421740 | 7 |
| 1114 | UEU-124K | 8435136411147 | 3 | 1876 | BFT-100 | 8435136418764 | 2 | 2221 | CTF-075 | 8435136422211 | 10 |
| 1164 | AFI-840 | 8435136411642 | 4 | 1880 | MAS-250 | 8435136418801 | 2 | 2222 | BAS-913 | 8435136422228 | 5 |
| 1222 | JSBA100-C60 | 8435136412229 | 3 | 1886 | GME-200 | 8435136418863 | 2 | 2224 | COF-809 | 8435136422242 | 5 |
| 1223 | JSBA100-C69 | 8435136412236 | 3 | 1887 | BMA-200 | 8435136418870 | 2 | 2225 | BAS-919 | 8435136422259 | 5 |
| 1224 | JSBA100-C48 | 8435136412243 | 3 | 1888 | KMV-100 | 8435136418887 | 2 | 2228 | SZB-212 | 8435136422280 | 5 |
| 1225 | SBA100-C69 | 8435136412250 | 3 | 1911 | GMA-400 | 8435136419112 | 2 | 2246 | SZB-148 | 8435136422464 | 5 |
| 1227 | SBA100-C60 | 8435136412274 | 3 | 1913 | BBT-100 | 8435136419136 | 2 | 2247 | PZB-453 | 8435136422471 | 5 |
| 1228 | SBA100-C48 | 8435136412281 | 3 | 1941 | MAS-300 | 8435136419419 | 2 | 2248 | SZB-180 | 8435136422488 | 5 |
| 1294 | SBA101-C69 | 8435136412946 | 3 | 1942 | TOR-250 | 8435136419426 | 2 | 2293 | SZB-128 | 8435136422938 | 5 |
| 1295 | SBA101-C60 | 8435136412953 | 3 | 1944 | TOR-150 | 8435136419440 | 2 | 2294 | SZB-129 | 8435136422945 | 5 |
| 1296 | SBA101-C48 | 8435136412960 | 3 | 1949 | BAP-200 | 8435136419495 | 2 | 2368 | CTF-190 | 8435136423683 | 12 |
| 1300 | SBA102-C69 | 8435136413004 | 3 | 1950 | BTA-225 | 8435136419501 | 2 | 2377 | CFR-680 | 8435136423775 | 10 |
| 1301 | SBA102-C60 | 8435136413011 | 3 | 2016 | CCI-174 | 8435136420163 | 10 | 2379 | BCF-060 | 8435136423799 | 10 |
| 1302 | SBA102-C48 | 8435136413028 | 3 | 2052 | UDM-110 | 8435136420521 | 8 | 2472 | ARTU009 | 8435136424727 | 10 |
| 1306 | SBA190-C69 | 8435136413066 | 3 | 2053 | UDM-115 | 8435136420538 | 8 | 2473 | ARTU059 | 8435136424734 | 10 |
| 1307 | SBA190-C60 | 8435136413073 | 3 | 2054 | UDM-120 | 8435136420545 | 8 | 2474 | ARTU900 | 8435136424741 | 10 |
| 1308 | SBA190-C48 | 8435136413080 | 3 | 2055 | UDM-125 | 8435136420552 | 8 | 2475 | ARTU901 | 8435136424758 | 10 |
| 1346 | SZB-190 | 8435136413462 | 5 | 2056 | UDM-210 | 8435136420569 | 8 | 2476 | ARTU902 | 8435136424765 | 10 |
| 1408 | V-2T | 8435136414087 | 10 | 2057 | UDM-215 | 8435136420576 | 8 | 2477 | ARTU903 | 8435136424772 | 10 |
| 1435 | FLTE-601 | 8435136414353 | 9 | 2058 | UDM-220 | 8435136420583 | 8 | 2493 | 17WTCAPH1 | 8435136424932 | 10 |
| 1436 | FLTE-481 | 8435136414360 | 9 | 2059 | UDM-225 | 8435136420590 | 8 | 2505 | CCT-171 | 8435136425052 | 10 |
| 1437 | FLTE-482 | 8435136414377 | 9 | 2060 | UDM-410 | 8435136420606 | 8 | 2506 | CCH-175 | 8435136425069 | 10 |
| 1460 | ABT-210 | 8435136414605 | 10 | 2061 | UDM-415 | 8435136420613 | 8 | 2513 | CTF-125 | 8435136425137 | 10 |
| 1502 | CAD | 8435136415022 | 10 | 2062 | UDM-420 | 8435136420620 | 8 | 2514 | CCT-125 | 8435136425144 | 10 |
| 1503 | CHD-950 | 8435136415039 | 10 | 2063 | UDM-425 | 8435136420637 | 8 | 2521 | CCI-179 | 8435136425212 | 10 |
| 1640 | SAI-311 | 8435136416401 | 10 | 2064 | UDM-615 | 8435136420644 | 8 | 2522 | CCI-175 | 8435136425229 | 10 |
| 1674 | AV-020 | 8435136416746 | 10 | 2065 | UDM-620 | 8435136420651 | 8 | 2735 | ARTU000 | 8435136427353 | 10 |
| 1725 | IKS-1E/FM | 8435136417255 | 2 | 2066 | UDM-625 | 8435136420668 | 8 | 2736 | ARTU001 | 8435136427360 | 10 |
| 1728 | DAB-031 | 8435136417286 | 2 | 2067 | UDM-815 | 8435136420675 | 8 | 2740 | ARTU058 | 8435136427407 | 10 |
| 1800 | HDT511V | 8435136418009 | 2 | 2068 | UDM-820 | 8435136420682 | 8 | 2844 | ONESAT | 8435136428442 | 4 |
| 1803 | HDT513V | 8435136418030 | 2 | 2069 | UDM-825 | 8435136420699 | 8 | 2845 | ONE118 | 8435136428459 | 4 |
| 1811 | HDT511V | 8435136418115 | 2 | 2075 | UDF-205 | 8435136420750 | 8 | 2849 | ONEHOME | 8435136428497 | 4 |
| 1813 | HDTN790V | 8435136418139 | 2 | 2076 | UDF-307 | 8435136420767 | 8 | 3029 | MAW-200 | 8435136430292 | 5 |
| 1816 | HDTF-C48G | 8435136418160 | 2 | 2077 | UDF-408 | 8435136420774 | 8 | 3030 | MAW-300 | 8435136430308 | 5 |
| 1817 | HDTF-C69V | 8435136418177 | 2 | 2078 | UDF-612 | 8435136420781 | 8 | 3060 | RPA-120 | 8435136430605 | 3 |
| 1818 | HDTF-C48V | 8435136418184 | 2 | 2079 | UDF-813 | 8435136420798 | 8 | 3065 | RPA-060 | 8435136430650 | 3 |

Reference list

| Ref. | Model | EAN code | Page |
|------|------------|---------------|------|
| 3067 | RPA-080 | 8435136430674 | 3 |
| 3069 | RPA-100 | 8435136430698 | 3 |
| 3071 | SPA-240 | 8435136430711 | 2 |
| 3083 | UEU-221K | 8435136430834 | 3 |
| 3105 | FAV-020 | 8435136431053 | 10 |
| 3131 | CFC-600 | 8435136431312 | 10 |
| 3132 | UCR-600 | 8435136431329 | 10 |
| 3133 | CCF-111 | 8435136431336 | 10 |
| 3152 | SZB-139 | 8435136431527 | 5 |
| 3160 | SZB-168 | 8435136431602 | 5 |
| 3241 | IFC-215 | 8435136432418 | 10 |
| 3249 | TAE1125 | 8435136432494 | 9 |
| 3263 | TAE1118 | 8435136432630 | 9 |
| 3264 | TAE1120 | 8435136432647 | 9 |
| 3372 | DMS-300 | 8435136433729 | 8 |
| 3432 | APB-124 | 8435136434320 | 3 |
| 3434 | ATP200-C60 | 8435136434344 | 9 |
| 3436 | APB-112-M | 8435136434368 | 3 |
| 3437 | APB-224-M | 8435136434370 | 3 |
| 3438 | APB-424 | 8435136434382 | 3 |
| 3500 | SAE-912 | 8435136435006 | 9 |
| 3503 | SAE-916 | 8435136435037 | 9 |
| 3507 | SAE-920 | 8435136435075 | 9 |
| 3516 | NBS-204 | 8435136435167 | 4 |
| 3529 | NBS-604 | 8435136435297 | 4 |
| 3530 | NBS-695 | 8435136435303 | 4 |
| 3531 | NBS-801 | 8435136435310 | 4 |
| 3532 | NBS-804 | 8435136435327 | 4 |
| 3534 | NBS-895 | 8435136435341 | 4 |
| 3583 | ATP200-C69 | 8435136435839 | 9 |
| 3584 | ATP200-C48 | 8435136435846 | 9 |
| 3585 | ATP104-C69 | 8435136435853 | 9 |
| 3586 | ATP104-C60 | 8435136435860 | 9 |
| 3587 | ATP104-C48 | 8435136435877 | 9 |
| 3588 | ATP190-C69 | 8435136435884 | 9 |
| 3589 | ATP190-C60 | 8435136435891 | 9 |
| 3590 | ATP190-C48 | 8435136435907 | 9 |
| 3591 | ATP290-C69 | 8435136435914 | 9 |
| 3592 | ATP290-C60 | 8435136435921 | 9 |
| 3593 | ATP290-C48 | 8435136435938 | 9 |

| Ref. | Model | EAN code | Page |
|------|-------------|---------------|------|
| 3594 | ATP400-C69 | 8435136435945 | 9 |
| 3595 | ATP400-C60 | 8435136435952 | 9 |
| 3596 | ATP400-C48 | 8435136435969 | 9 |
| 3597 | ATP490-C69 | 8435136435976 | 9 |
| 3598 | ATP490-C60 | 8435136435983 | 9 |
| 3599 | ATP490-C48 | 8435136435990 | 9 |
| 3842 | TPC-010 | 8435136438427 | 6 |
| 3844 | SPC-030 | 8435136438441 | 6 |
| 3849 | MCP-801 | 8435136438496 | 6 |
| 3851 | MCP-811 | 8435136438519 | 6 |
| 3854 | MHD-201 | 8435136438540 | 6 |
| 3855 | MHD-202 | 8435136438557 | 6 |
| 3858 | HTL-ST2 | 8435136438588 | 7 |
| 3859 | HTL-TT2 | 8435136438595 | 7 |
| 3860 | HTL-STC | 8435136438601 | 7 |
| 3861 | HTL-TRX | 8435136438618 | 7 |
| 4020 | MDI-910 | 8435136440208 | 6 |
| 4021 | TDI-900 | 8435136440215 | 6 |
| 4026 | TGT-100 | 8435136440260 | 6 |
| 4070 | SPI-300 | 8435136440703 | 7 |
| 4084 | SRF-011 | 8435136440840 | 6 |
| 4096 | SRC-111 | 8435136440963 | 6 |
| 4098 | MTI-900 | 8435136440987 | 6 |
| 4099 | MTI-800 | 8435136440994 | 6 |
| 4280 | SMR-601 | 8435136442806 | 7 |
| 4281 | PMR-601 | 8435136442813 | 7 |
| 4282 | OMR-601 | 8435136442820 | 7 |
| 4402 | COF-700 | 8435136444022 | 7 |
| 4403 | BAS-700 | 8435136444039 | 7 |
| 4411 | BAS-900 | 8435136444114 | 7 |
| 4427 | HPA-125 | 8435136444275 | 6 |
| 4433 | AMX-400 | 8435136444336 | 6 |
| 4437 | HPA-920 | 8435136444374 | 6 |
| 4482 | MAC-HOME HD | 8435136444824 | 5 |
| 4485 | MAC-401 | 8435136444855 | 5 |
| 4488 | MAC-HOME | 8435136444886 | 5 |
| 4492 | CFP-900 | 8435136444923 | 6 |
| 4493 | MAC-HD | 8435136444930 | 5 |
| 4888 | FSP-102 | 8435136448884 | 11 |
| 4889 | FSP-103 | 8435136448891 | 11 |

| Ref. | Model | EAN code | Page |
|------|------------------|---------------|------|
| 4890 | FSP-104 | 8435136448907 | 11 |
| 4891 | FSP-108 | 8435136448914 | 11 |
| 4892 | FAO-004 | 8435136448921 | 11 |
| 4893 | FAO-006 | 8435136448938 | 11 |
| 4895 | FRD-100 | 8435136448952 | 13 |
| 4896 | FSP-202 | 8435136448969 | 11 |
| 4897 | FSP-208 | 8435136448976 | 11 |
| 4898 | FSP-204 | 8435136448983 | 11 |
| 4899 | FSP-216 | 8435136448990 | 11 |
| 4904 | FSP-302 | 8435136449041 | 11 |
| 4905 | FSP-303 | 8435136449058 | 11 |
| 4914 | FRD-400 | 8435136449140 | 10 |
| 4915 | FTD-420 | 8435136449157 | 11 |
| 4916 | FSP-304 | 8435136449164 | 11 |
| 4918 | FSP-306 | 8435136449188 | 11 |
| 4933 | FLO-005 | 8435136449331 | 11 |
| 4934 | FLO-010 | 8435136449348 | 11 |
| 4935 | FLO-020 | 8435136449355 | 11 |
| 4936 | FLO-030 | 8435136449362 | 11 |
| 4937 | FLO-040 | 8435136449379 | 11 |
| 4938 | FLO-050 | 8435136449386 | 11 |
| 4939 | FLO075 | 8435136449393 | 11 |
| 4940 | FLO-100 | 8435136449409 | 11 |
| 4946 | FAO-105 | 8435136449461 | 11 |
| 4947 | FAO-110 | 8435136449478 | 11 |
| 4948 | FAO-115 | 8435136449485 | 11 |
| 4952 | QUAD-GTU | 8435136449522 | 11 |
| 4953 | QUATRO-GTU | 8435136449539 | 11 |
| 4955 | WHOLEBAND-LNB | 8435136449553 | 11 |
| 4956 | OPTICAL-LNB | 8435136449560 | 11 |
| 4957 | ODU32-KIT | 8435136449577 | 11 |
| 4960 | CCO-502 | 8435136449607 | 11 |
| 4961 | ODU-32 | 8435136449614 | 11 |
| 4962 | FSA-401 | 8435136449621 | 11 |
| 4964 | SWITCH B. PLUS 8 | 8435136449645 | 11 |
| 4965 | SWITCH B. BASE 8 | 8435136449652 | 11 |
| 4966 | BARREL CONNEC | 8435136449669 | 11 |
| 4967 | DSCR-GTU | 8435136449676 | 11 |
| 4968 | O2E | 8435136449683 | 11 |
| 5360 | PSE-300 | 8435136453604 | 10 |

Model list

| Model | Ref. | Page | Modelo | Ref. | Page | Modelo | Ref. | Page | Modelo | Ref. | Page |
|---------------|------|------|-----------|------|------|-------------|------|------|------------------|------|------|
| 17WTCAPH1 | 2493 | 10 | CFC-600 | 3131 | 10 | HTL-ST2 | 3858 | 7 | SBA102-C69 | 1300 | 3 |
| ABT-210 | 1460 | 10 | CFP-900 | 4492 | 6 | HTL-STC | 3860 | 7 | SBA190-C48 | 1308 | 3 |
| AFI-840 | 1164 | 4 | CFR-680 | 2377 | 10 | HTL-TRX | 3861 | 7 | SBA190-C60 | 1307 | 3 |
| AMX-400 | 4433 | 6 | CHD-950 | 1503 | 10 | HTL-TT2 | 3859 | 7 | SBA190-C69 | 1306 | 3 |
| APB-112-M | 3436 | 3 | COF-700 | 4402 | 7 | IFC-215 | 3241 | 10 | SCF-085 | 1067 | 2 |
| APB-124 | 3432 | 3 | COF-809 | 2224 | 5 | IKS-1E/FM | 1725 | 2 | SMR-601 | 4280 | 7 |
| APB-224-M | 3437 | 3 | CTF-075 | 2221 | 10 | JSBA100-C48 | 1224 | 3 | SPA-240 | 3071 | 2 |
| APB-424 | 3438 | 3 | CTF-125 | 2513 | 10 | JSBA100-C60 | 1222 | 3 | SPC-030 | 3844 | 6 |
| ARE-120 | 2174 | 7 | CTF-190 | 2368 | 12 | JSBA100-C69 | 1223 | 3 | SPI-300 | 4070 | 7 |
| ARE-220 | 2169 | 7 | DAB-031 | 1728 | 2 | KMV-100 | 1888 | 2 | SRC-111 | 4096 | 6 |
| ARE-320 | 2171 | 7 | DMS-300 | 3372 | 8 | MAC-401 | 4485 | 5 | SRF-011 | 4084 | 6 |
| ARE-420 | 2172 | 7 | DSCR-GTU | 4967 | 11 | MAC-HD | 4493 | 5 | SWITCH B. BASE 8 | 4965 | 11 |
| ARTU000 | 2735 | 10 | FAO-004 | 4892 | 11 | MAC-HOME | 4488 | 5 | SWITCH B. PLUS 8 | 4964 | 11 |
| ARTU001 | 2736 | 10 | FAO-006 | 4893 | 11 | MAC-HOME HD | 4482 | 5 | SZB-128 | 2293 | 5 |
| ARTU009 | 2472 | 10 | FAO-105 | 4946 | 11 | MAS-250 | 1880 | 2 | SZB-129 | 2294 | 5 |
| ARTU058 | 2740 | 10 | FAO-110 | 4947 | 11 | MAS-300 | 1941 | 2 | SZB-139 | 3152 | 5 |
| ARTU059 | 2473 | 10 | FAO-115 | 4948 | 11 | MAW-200 | 3029 | 5 | SZB-148 | 2246 | 5 |
| ARTU900 | 2474 | 10 | FAV-020 | 3105 | 10 | MAW-300 | 3030 | 5 | SZB-168 | 3160 | 5 |
| ARTU901 | 2475 | 10 | FIS-950 | 1107 | 10 | MCP-801 | 3849 | 6 | SZB-180 | 2248 | 5 |
| ARTU902 | 2476 | 10 | FLO-005 | 4933 | 11 | MCP-811 | 3851 | 6 | SZB-190 | 1346 | 5 |
| ARTU903 | 2477 | 10 | FLO-010 | 4934 | 11 | MDI-910 | 4020 | 6 | SZB-212 | 2228 | 5 |
| ATP104-C48 | 3587 | 9 | FLO-020 | 4935 | 11 | MHD-201 | 3854 | 6 | TAE1118 | 3263 | 9 |
| ATP104-C60 | 3586 | 9 | FLO-030 | 4936 | 11 | MHD-202 | 3855 | 6 | TAE1120 | 3264 | 9 |
| ATP104-C69 | 3585 | 9 | FLO-040 | 4937 | 11 | MTI-800 | 4099 | 6 | TAE1125 | 3249 | 9 |
| ATP190-C48 | 3590 | 9 | FLO-050 | 4938 | 11 | MTI-900 | 4098 | 6 | TDI-900 | 4021 | 6 |
| ATP190-C60 | 3589 | 9 | FLO075 | 4939 | 11 | NBS-204 | 3516 | 4 | TGT-100 | 4026 | 6 |
| ATP190-C69 | 3588 | 9 | FLO-100 | 4940 | 11 | NBS-604 | 3529 | 4 | TOR-150 | 1944 | 2 |
| ATP200-C48 | 3584 | 9 | FLTE-481 | 1436 | 9 | NBS-695 | 3530 | 4 | TOR-250 | 1942 | 2 |
| ATP200-C60 | 3434 | 9 | FLTE-482 | 1437 | 9 | NBS-801 | 3531 | 4 | TPC-010 | 3842 | 6 |
| ATP200-C69 | 3583 | 9 | FLTE-601 | 1435 | 9 | NBS-804 | 3532 | 4 | UCF-170 | 1847 | 10 |
| ATP290-C48 | 3593 | 9 | FRD-100 | 4895 | 13 | NBS-895 | 3534 | 4 | UCR-600 | 3132 | 10 |
| ATP290-C60 | 3592 | 9 | FRD-400 | 4914 | 10 | O2E | 4968 | 11 | UDF-205 | 2075 | 8 |
| ATP290-C69 | 3591 | 9 | FSA-401 | 4962 | 11 | ODU | 4961 | 11 | UDF-307 | 2076 | 8 |
| ATP400-C48 | 3596 | 9 | FSP-102 | 4888 | 11 | ODU32-KIT | 4957 | 11 | UDF-408 | 2077 | 8 |
| ATP400-C60 | 3595 | 9 | FSP-103 | 4889 | 11 | OMR-601 | 4282 | 7 | UDF-612 | 2078 | 8 |
| ATP400-C69 | 3594 | 9 | FSP-104 | 4890 | 11 | ONE118 | 2845 | 4 | UDF-813 | 2079 | 8 |
| ATP490-C48 | 3599 | 9 | FSP-108 | 4891 | 11 | ONEHOME | 2849 | 4 | UDM-110 | 2052 | 8 |
| ATP490-C60 | 3598 | 9 | FSP-202 | 4896 | 11 | ONESAT | 2844 | 4 | UDM-115 | 2053 | 8 |
| ATP490-C69 | 3597 | 9 | FSP-204 | 4897 | 11 | OPTICAL-LNB | 4956 | 11 | UDM-120 | 2054 | 8 |
| AV-020 | 1674 | 10 | FSP-208 | 4898 | 11 | PMR-601 | 4281 | 7 | UDM-125 | 2055 | 8 |
| BAP-200 | 1949 | 2 | FSP-216 | 4899 | 11 | PSE-300 | 5360 | 10 | UDM-210 | 2056 | 8 |
| BARREL CONNEC | 4966 | 11 | FSP-302 | 4904 | 11 | PZB-453 | 2247 | 5 | UDM-215 | 2057 | 8 |
| BAS-700 | 4403 | 7 | FSP-303 | 4905 | 11 | QUAD-GTU | 4952 | 11 | UDM-220 | 2058 | 8 |
| BAS-900 | 4411 | 7 | FSP-304 | 4916 | 11 | QUATRO-GTU | 4953 | 11 | UDM-225 | 2059 | 8 |
| BAS-913 | 2222 | 5 | FSP-306 | 4918 | 11 | RPA-060 | 3065 | 3 | UDM-410 | 2060 | 8 |
| BAS-919 | 2225 | 5 | FTD-420 | 4915 | 11 | RPA-080 | 3067 | 3 | UDM-415 | 2061 | 8 |
| BBT-100 | 1913 | 2 | GMA-400 | 1911 | 2 | RPA-100 | 3069 | 3 | UDM-420 | 2062 | 8 |
| BCF-060 | 2379 | 10 | GME-200 | 1886 | 2 | RPA-120 | 3060 | 3 | UDM-425 | 2063 | 8 |
| BFT-100 | 1876 | 2 | HDT511V | 1800 | 2 | SAE-912 | 3500 | 9 | UDM-615 | 2064 | 8 |
| BMA-200 | 1887 | 2 | HDT513V | 1803 | 2 | SAE-916 | 3503 | 9 | UDM-620 | 2065 | 8 |
| BTA-225 | 1950 | 2 | HDTC790V | 1811 | 2 | SAE-920 | 3507 | 9 | UDM-625 | 2066 | 8 |
| CAD | 1502 | 10 | HDTF-C48G | 1816 | 2 | SAI-311 | 1640 | 10 | UDM-815 | 2067 | 8 |
| CCF-111 | 3133 | 10 | HDTF-C48V | 1818 | 2 | SBA100-C48 | 1228 | 3 | UDM-820 | 2068 | 8 |
| CCH-175 | 2506 | 10 | HDTF-C58V | 1819 | 2 | SBA100-C60 | 1227 | 3 | UDM-825 | 2069 | 8 |
| CCI-174 | 2016 | 10 | HDTF-C60G | 1820 | 2 | SBA100-C69 | 1225 | 3 | UEU-121K | 1113 | 3 |
| CCI-175 | 2522 | 10 | HDTF-C60V | 1821 | 2 | SBA101-C48 | 1296 | 3 | UEU-124K | 1114 | 3 |
| CCI-179 | 2521 | 10 | HDTF-C69V | 1817 | 2 | SBA101-C60 | 1295 | 3 | UEU-221K | 3083 | 3 |
| CCO-502 | 4960 | 11 | HDTN790V | 1813 | 2 | SBA101-C69 | 1294 | 3 | UEU-421K | 1112 | 3 |
| CCT-125 | 2514 | 10 | HPA-125 | 4427 | 6 | SBA102-C48 | 1302 | 3 | V-2T | 1408 | 10 |
| CCT-171 | 2505 | 10 | HPA-920 | 4437 | 6 | SBA102-C60 | 1301 | 3 | WHOLEBAND-LNB | 4955 | 11 |

Terms & Conditions of Sale

1. Prices & Supply

All prices provided in this price list are non-inclusive of GST, and for ex-warehouse goods. Prices are applicable and valid according to the price list on the day of order receipt. Prices are subject to change without prior notice.

Estimated time of delivery: 3- 4 weeks, subject to stock availability at the time of purchase order receipt.

2. Payment Conditions

Standard payment conditions apply unless alternative arrangements are made between the purchaser and IKUSI. If payment is late or not received, IKUSI is entitled to take legal action in order to recover the goods and claim interest and expenses incurred. Ownership of the goods is not passed onto the purchaser until full payment is received.

3. Taxes & Expenses

Other additional taxes or expenses that may be incurred in transporting the goods to their final destination will be incurred by the purchaser and not IKUSI.

4. Warranty & RMA's

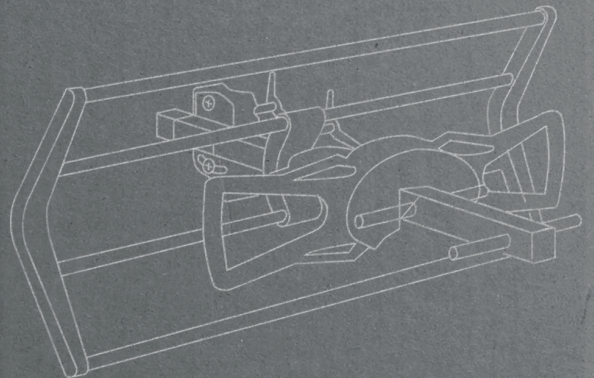
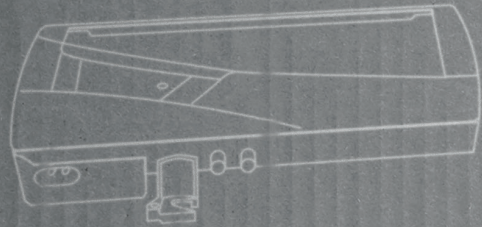
IKUSI warrants the quality of their products against any visible or hidden fabrication defects for a term of 24 months from date of purchase. IKUSI must be made aware of any defects in writing or within one week of receipt of goods. The warranty only covers IKUSI supplied products. The warranty does not cover any incurred damage to connected equipment, related systems or any consequential damages.

Returned Material Authority (RMA) 1. Goods presented for repair may be replaced by refurbished goods of the same type rather than being repaired. Refurbished parts may be used to repair the goods. 2. During the process of repair, some or all of your stored data may be lost. Please ensure that you have saved this data elsewhere prior to repair. A pre-authorized copy of RMA form must accompany all return shipments. All return goods must be reasonably prepared for shipment, including packaging and proper boxing for small components and/or banding for pallets, to protect them during transit. Received Damaged Goods caused by improper packaging will not be credited. ALL Goods must be returned in its Original Packaging and must be in Good Saleable Condition. Goods not meeting this condition will be rejected for credit.

5. Governing Laws

The conditions of sale are governed according to Australian Consumer Law Any disputes must be settled in Victoria.

The acceptance by the buyer of our invoice or delivery note for the received goods implies acceptance of all the general conditions of sale.



AUSTRALIA - NEW ZEALAND
7 Amsted Road . 3153 Bayswater (Victoria)
Telf: +61 3 97208000 . Fax: +61 3 97207422
australia.tv@ikusi.com
www.ikusi.tv/en